

GALILEI

Be cool, Be alive.

Slim-type medical cool box

MediFridge

Equipped with an environmentally friendly non-fluorocarbon refrigerant!!

Selectable EC mode with a wide temperature setting range and HC mode with high-precision temperature control!





Adoption of Non-CFC refrigerant R1234yf

Compared to the conventional substitute refrigerant R134a (GWP: 1430), R1234yf (GWP: 1) significantly reduces the impact on global warming.

Aiming for zero global warming impact from refrigerant leakage!
For all models and products with built-in compressors.*

*Some models excluded

Operating Mode Selection

EC (Eco Control) Mode

Allows a wide temperature setting range from 2 to 25°C. Suitable not only for refrigerated pharmaceuticals but also for the storage of room-temperature pharmaceuticals.



EC (Eco Control) Mode

Temperature is displayed in 1°C increments.

HC (High Control) Mode

Selectable set temperatures of 3°C, 4°C, or 5°C.

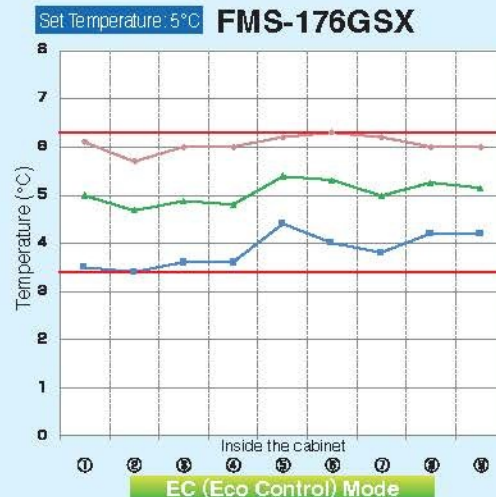
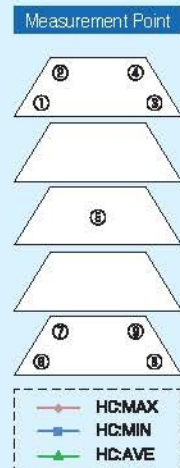
- Temperature distribution: within $\pm 1^\circ\text{C}$ of the set temperature
- Reduced temperature fluctuation ensures more stable internal temperature control

Ideal for the storage of pharmaceuticals requiring strict temperature management.



HC (High Control) Mode

Selectable set temperatures of 3°C, 4°C, or 5°C.



- * Measurement conditions: Ambient temperature 30°C, humidity 60%, no load; air temperature measured at 9 points inside the cabinet.
- * Performance values may vary slightly depending on product specifications, operating conditions, and installation environment.
- * All data are measured in accordance with our internal standards.

Selectable Color Variations

Choose from six color variations to suit your preferences.

In addition to the standard color (Ivory), six optional colors are available: Brown, Pink, Orange, Yellow, Green, and Sky Blue. Select the color that best matches your needs.

Functional Space Design

The color of the machine compartment panel and top decorative panel can be selected to match the interior environment, allowing for coordinated total design.

Zoning by Color

Color-based zoning makes it easier to visually distinguish different sections. By using colors that match specific clinical departments, intuitive recognition and understanding are enhanced.

Visual Identification by Application or User

Assigning different colors according to stored items or responsible personnel enables quick visual identification and helps prevent handling errors.



- *The colors shown above are for reference only; actual product colors may vary slightly.
- *No additional charge applies when a color option is selected at the time of purchase.



Lineup



FMS-126GSX※1

Net Capacity 121L

External Dimensions : W500×D450(548)×H1,430mm
Internal Dimensions : W420×D285×H897mm



FMS-176GSX※1

Net Capacity 179L

External Dimensions : W500×D450(548)×H1,870mm
Internal Dimensions : W420×D285×H1,347mm



FMS-306GSX

Net Capacity 303L

External Dimensions : W500×D650(748)×H1,870mm
Internal Dimensions : W420×D485×H1,347mm

※1 Anti-tip measures are required.

Standard Equipment

Casters



Easy installation and relocation with four swivel casters.

Locking Device



Individual keys are provided for each unit to enhance security, preventing access with keys from other refrigerators.

Anti-tip Brackets



Designed to improve safety in the event of unexpected movement.

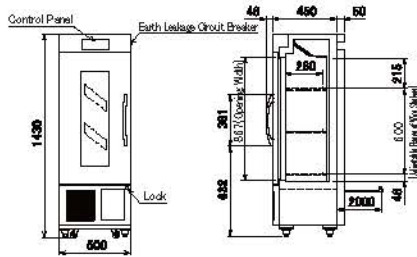
※If you require fixed installation, please contact our sales representative.
※Anti-tip measures are recommended for all models.

Options

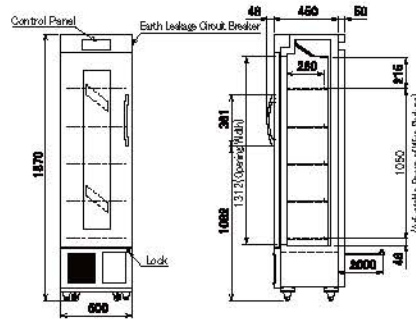
Thermo Recorder	Shading Film Specification	No-Glass Specification	Right Hinged Door Specification	Narcotics Safe
<p>Automatically records the history of internal temperature conditions. ※Includes one year's supply of recording paper (12 sheets).</p> <p>Recording Range -10°C to 44°C (Recording accuracy: ±2°C)</p> 	<p>Blocks external light, including ultraviolet rays. Suitable for the storage of pharmaceuticals requiring a cool, dark environment.</p> 	<p>※No additional charge applies.</p> 		<p>Large Type External Dimensions : W305×D214×H363mm Weight : 5.1 kg</p> <p>Small Type External Dimensions : W255×D150×H215mm Weight : 3.0 kg</p>  <p>※Mounting hardware required separately.</p>
Temperature Data Logger	Measurement	Punching Plate	Wire Shelf (with Shelf Supports)	Slide Rack Specification(Lower Two Levels)
<p>testo 174T Series</p>  <p>testo 174T (Software compatible)</p> <p>testo 174T BT (Mobile app compatible)</p>	<p>Prevents cold air leakage when inserting sensor cables or similar devices.</p> 	<p>Ideal for placing small bottles.</p>  <p>External Alarm Contact</p>	<p>For use with : 126GS X 176GS X 306GS X</p> <p>Seismic Fixing Brackets for Legs</p> <p>Set of two. ※If you require seismic fixing installation, please contact our sales representative.</p> 	<p>A slide rack configuration for convenient loading and unloading of pharmaceuticals and samples (lower two levels only). ※Available as an option only for models FMS-176GSX and FMS-306GSX.</p>  <p>Slide Rack Specification(Lower Two Levels)</p> <p>Battery-operated; sounds a buzzer to notify users in the event of a power failure.</p>

Specifications

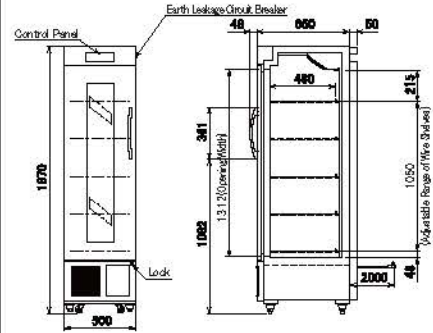
FMS-126GSX



FMS-176GSX

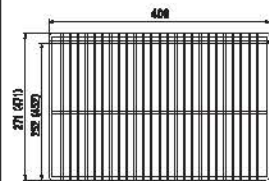


FMS-306GSX



Model Name		FMS-126GSX	FMS-176GSX	FMS-306GSX
Dimensions	External Dimensions (mm) (WxDxH)	500×450(548)×1430	500×450(548)×1870	500×650(748)×1870
	Internal Dimensions (mm) (WxDxH)	420×265×897	420×265×1347	420×485×1347
	Net Capacity (L)	121L	179L	303L
	Product Weight (kg)	64kg	76kg	88kg
Materials	Exterior	Painted steel plate		
	Interior	Painted steel plate / color steel plate		
	Door	Front: painted steel plate	Rear: painted steel plate	Special double glass Single magnetic door
	Insulation	Rigid polyurethane foam, foamed-in-place		
Temperature Setting Range		EC Mode: 2 to 25°C / HC Mode: 3 to 5°C		
Temperature Fluctuation		EC Mode: 4°C (no load, ambient temperature -5 to 35°C) / HC Mode: 2°C (no load, ambient temperature 1 to 30°C)		
Refrigeration System	Compressor Output	75W		
	Refrigerant Control	Capillary tube		
	Condenser	Wire-tube type		
	Evaporator	Forced-air fin-and-tube type		
	Refrigerant	R1234yf		
	Temperature Control	Microcomputer-controlled digital temperature display		
Defrosting System		Automatic sensor-controlled cycle defrost		
Operating Ambient Conditions (°C)		-5°C to +35°C, max. 80%RH		
Heat Rejection (50.60Hz)		276 / 329W		
Casters		Four swivel casters		
Accessories		3 wire shelves, key		5 wire shelves, key
Alarm Functions		High-temperature alarm, low-temperature alarm, door-open alarm, filter inspection indicator, etc.		

Wire Shelf Dimensions (mm)



FMS-126GSX/176GSX/(306GSX)

GALILEI
Be cool, Be alive.



This product requires proper collection of fluorocarbons to help prevent global warming.

⚠ Safety Precautions

- The products shown in this leaflet are for indoor use. Please use and store them in locations away from rain.
- Always carefully read the instruction Manual before use to ensure proper operation.
- Installation, drainage, and electrical wiring are required. Please consult the dealer where the product was purchased or a qualified professional.

- **Fukushima Gallei (Thailand) Co., Ltd.**
16 Asoke Court G Floor Room 2G, 1st Floor Room 1A, Sukhumvit 21 (Asoke) Rd., Klongtoey-Nua, Wattana, Bangkok 10110, Thailand Tel.66-02-258-3690
- **Fukushima Gallei Singapore Pte. Ltd.**
1003 Bukit Merah Central #02-06 Singapore 159836, Singapore Tel.65-6271-0460
- **Fukushima Gallei Vietnam Co., Ltd.**
Room 502, 5F, Zen Plaza building, 54-56 Nguyen Trai Street, Ben Thanh Ward, HCMC, Vietnam Tel.84-28-3933-3628
[Hanoi Branch]
8F TID Centre Building, 4 Lieu Giai St, Ngoc Ha Ward, Hanoi, Vietnam Tel.84-24-3755-6000
- **Fukushima Gallei Malaysia Sdn. Bhd.**
Lot 6.01, 6th Floor Wisma Central, Box617 Jalan Ampang 50450 Kuala Lumpur, Malaysia Tel.60-3-2181-1034
- **PT. Fukushima Gallei Indonesia**
Ruko Wisteria 1 Lt.2 Jl. Panglima Polim No. 7A, Melawai Kec. Kebayoran Baru, Jakarta Selatan 12160, Indonesia Tel.62-21-2709-5619

- **Fukushima Gallei (H.K.) Co., Ltd.**
Unit 903, 9/F, Westlands Centre, 20 Westlands Road, Quarry Bay, Hong Kong Tel.852-2885-5679
- **Fukushima Gallei Philippine Corporation**
Unit 919 One Park Drive Cor 11th Drive Cor 9th Ave BGC Fort Bonifacio Taguig 1634, Philippines Tel.63-02-8551-2292
- **Fukushima Gallei Taiwan Co., Ltd.**
Rm. 5, 12F, No. 112, Sec. 2, Zhongshan N. Rd., Zhongshan Dist., Taipei City 10449, Taiwan (R.O.C.) Tel.886-2-2521-9810
- **Fukushima Gallei Cambodia Co., Ltd.**
Royal PSL Apartment #24, Ground floor, St.57 and St. 360, Phnom Penh, Phnom Penh, Cambodia Tel.855-92-407957
- **Fukushima Gallei Myanmar Co. Ltd.**
No. (262), 12th Street Ngwe Kyar Yan 3 Quarter South Okkalapa Township, Yangon, Myanmar email address : myanmar@galilei.co.jp
- **Fukushima Gallei (Shanghai) Co., Ltd.**
Room B316, SIM Technology Building, No.633, Jinzhong Road, Changning District, Shanghai, China Tel.86-21-6248-1512

ISO 9001:2015

Acquisition of certification

Okayama Factory
Shiga Factory
Kansai Engineering Dept
SB Division

Tokyo Engineering Dept
Tokyo Installation Works Dept
Chubu Engineering Dept
Nishi-Nihon Engineering Dept

ISO 14001:2015

Acquisition of certification

Head Office, Tokyo
Kansai service center
Nagoya, Fukuoka
Shiga Factory,
Okayama Factory

- A precaution-for-use label is attached to each product.
- Specifications and appearances are subject to change without notice.
- The colors of products shown in this brochure may differ slightly from the actual products due to printing.
- All contents of this brochure are copyrighted by the manufacturer. Unauthorized reproduction is strictly prohibited.

Address inquiries and orders for products made by FUKUSHIMA GALILEI CO.LTD.: D:

The contents of this catalog are valid as of March 2020. (2020-00)G

Pamphlet No.

MDP-182